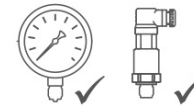


Pressure Gauges / Diaphragm Seals / Diaphragm Group Types / DS0530 Flat Flanged Bottom Connections

CONSTRUCTIVE PROPERTIES

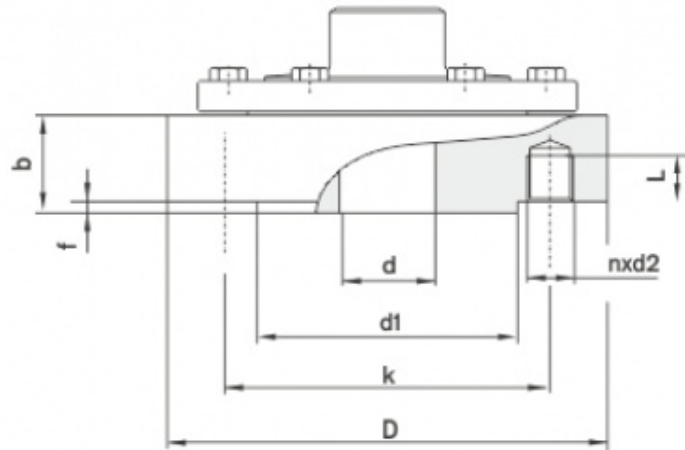
	STANDARD	OPTIONAL
Scale Unit	bar	-
Scale Range (PN)	0/0,6 0/1 0/1,6 0/2,5 0/4 0/6 0/10 0/16 0/25 0/40 0/60 0/100 0/160 0/400 0/600	
Upper Body Material	AISI-316L	Hastelloy C276 Monel 400
Material of Membrane	AISI-316L	Hastelloy C276 Monel 400 PTFE
Flanged-Process Connection Material	AISI-316L	Monel 400 Hastelloy C276 PTFE
Instrument Connection	G 1/2"	-
Assembling	Direct Connection	Capillary Clamp (Max. 4 m.) Cooling Tower Capillary with SS armour covered (Max. 4 m.)
Process Connection	Flanged ASME B16.5	Flanged EN 1092-1
Filling Liquid	Silicon Oil	-
Sealing	Viton	PTFE
Accuracy Class % (Will be added to instrument accuracy)	±0,5% Direct Mounting	±1% Capillary Mounting
Nuts & Bolts	AISI-304	AISI-316L



DS0530
Flat Flanged Bottom Connections

USAGE PROPERTIES

Storage Temperature	-40 ... +70 °C	-
Process Temperature	-45/+150°C	-
Leakage Test	Helium Sniffer Leakage Test	
Conformity	NACE MR 1075 Oxygen Service DIN ANSI	



Flanş Ölçüleri : DIN 2501, PN 10/40, PN 64/160 bar

PN	DN	d	D	b	k	d1	f	nxd2	Model #
10/40	15	15	99	28	65	45	2	4xM12	DS 0530 12
	20	20	105	24	75	58	2	4xM12	DS 0530 13
	25	25	115	22	85	68	2	4xM12	DS 0530 14
64/160	15	15	105	24	75	45	2	4xM12	DS 0530 22
	25	25	140	24	100	68	2	4xM16	DS 0530 24

Flanş Ölçüleri : ANSI B 16,5 PN 150, PN 300, PN 600 psi

PN	DN	d	D	b	k	d1	f	nxd2	Model #
150	1/2"	22,3	99	28	60,3	34,9	1,6	4x1/2"-13 UNC	DS 0530 50
	3/4"	27,7	99	28	69,8	42,9	1,6	4x1/2"-13 UNC	DS 0530 51
	1"	33,5	108	22	79,4	50,8	1,6	4x1/2"-13 UNC	DS 0530 52
300	1/2"	22,3	99	28	66,7	34,9	1,6	4x1/2"-13 UNC	DS 0530 60
	3/4"	27,7	117,5	22	82,5	42,9	1,6	4x5/8"-11 UNC	DS 0530 61
	1"	33,5	124	22	88,9	50,8	1,6	4x5/8"-11 UNC	DS 0530 62
600	1/2"	22,3	99	32	66,7	34,9	6,4	4x1/2"-13 UNC	DS 0530 70
	3/4"	27,7	117,5	28	82,5	42,9	6,4	4x5/8"-11 UNC	DS 0530 71
	1"	33,5	124	24	88,9	50,8	6,4	4x5/8"-11 UNC	DS 0530 72